



# KILLIGREW NEWS

16th February 2024

Dear Parents/Carers,

*It looks like spring is arriving at Killigrew-in the last couple of days-the daffodils have appeared and the blossom is starting to appear on the trees. Doesn't that and a little sunshine lift the spirits!*

*I wish you and your family a very enjoyable half term break next week. You may be interested in these links-50 things to do before you are 5 app*

<https://www.50thingstodo.org/five>

*and 50 things to do before you are 11 ¾.*

<https://www.nationaltrust.org.uk/visit/50-things>

*I look forward to seeing you and the children on Monday 26<sup>th</sup> February.*

*Kindest regards,*

T. Mylotte  
Head teacher

## Attendance

Excellent attendance for Kingfishers last week-well done!

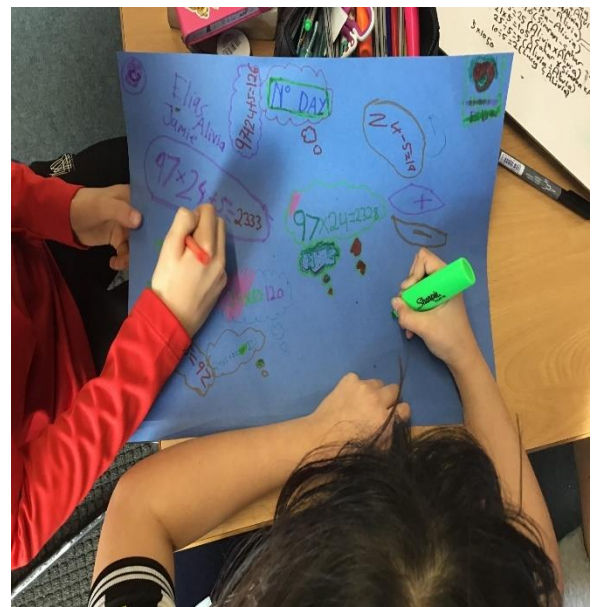
Kingfishers	98.0%
Macaws	96.9%
Eagles	96.4%
Firecrests	95.7%
Goldfinches	95.3%
Hummingbirds	94.9%
Puffins	94.3%
Peacocks	94.3%
Bluejays	94.1%
Pelicans	93.3%
Parakeets	93.2%
Toucans	93.0%
Cardinals	91.7%
Nightingales	91.4%
Skylarks	91.0%

## Number Day 2024

We celebrated this year's Number Day by dressing as our favourite number. We explored these numbers in a variety of contexts and had phase-specific focuses on the concept of 'numbers living within other numbers.'

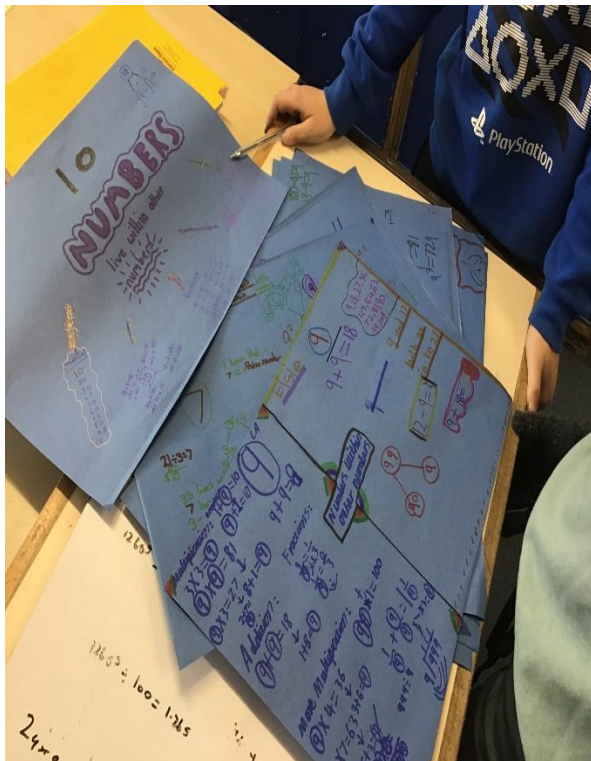


In Early Years, the children spotted numbers in the environment and wrote and made them, while in KS1 learning centred on addition facts.



In LKS2, children examined links within multiplication and in UKS2, children delved further into multiples and factors.

The children really enjoyed making connections between their numbers and others.



In addition, teachers and children had the opportunity to share their favourite maths-related jokes...why was 6 afraid of 7? Because 789!

Thank you to everyone for taking part and being so enthusiastic about maths learning at Killigrew.

## School Nursing Team

Please find attached the Winter Term newsletter from the School Nursing Team.

## Is my child too ill for school?

<https://www.nhs.uk/live-well/is-my-child-too-ill-for-school/>

## Free School Meals

If your circumstances have changed, you may be interested in the following information regarding free school meals for your child. [Free school meals](#)

## Killigrew Shall Make it to the Ball!

EXCITING NEWS.....The PTA has secured pantomime tickets for December 2024. This year, the performance is Cinderella. Tickets will go on sale after half term so watch this space for further information.

## World Book Day

Who would like to win a golden ticket with an amazing prize?

You will be able to pre-order some very special chocolate bars with lots of exciting prizes - from rewards for classes to museum tickets as well as the chance to win a party at a laser quest. Details of this will be sent out on Facebook and WhatsApp over half term. So if you haven't already, please join our Facebook page 'Killigrew PTA'.

## Message from the Active Travel Ambassadors

The Y5 Active Travel Ambassadors (ATAs) are re-launching the walk to school initiative. Our reasons are:

*Walking is healthier than going in a car.*

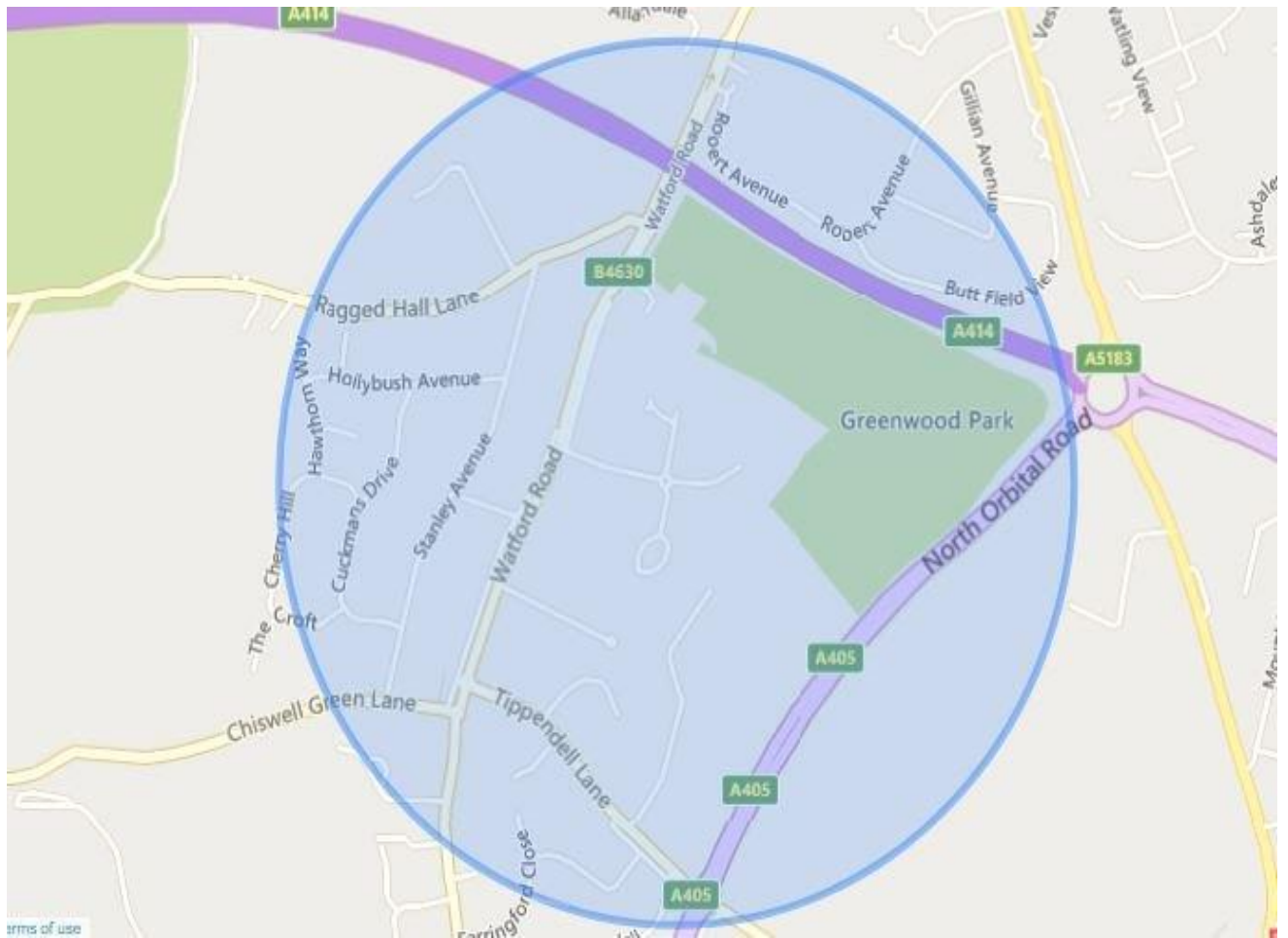
*Children who walk before school do better in school.*

*It reduces pollution in the air, especially around schools. We can sometimes smell the car fumes from the Greenwood Park car park in the playground.*

*It is better for the planet because cars are contributing to global warming.*

*Park and stride needs to be a longer distance, for example parking by the Co-op or Midway Surgery and then walking. The Greenwood Park car park does not count as park and stride. Your trip only counts as a walk if you walked inside this area shown below- this shows half a mile from the school in any direction, which would be about a ten minute walk.*

## PTA Update





## Feedback Form

Please add any positive comments, concerns or suggestions:

<https://forms.office.com/Pages/ResponsePage.aspx?id=UKgBZMCcg0yzyPnqbCwRs9svUSsaXKhIrJlIeIKv0S9UNURUFM2MTYzODILUEk5MVNMOVpCN0lWQy4u>

Name:

Child's Class:

### Dates-Academic Year 2023-24

SPRING TERM 2024	
Date	Event
Monday 19 <sup>th</sup> -Friday 23 <sup>rd</sup> February	Half term-school closed
Friday 1 <sup>st</sup> March	Secondary School allocation day
Thursday 7 <sup>th</sup> March	World Book Day (Dressing up)
Friday 8 <sup>th</sup> March	Eagles assembly (parents and grandparents welcome)
	Big Football day
	PTA chocolate bar sale-more information to follow.
Monday 11 <sup>th</sup> March	PTA Year 2 Bake Sale
8 <sup>th</sup> -17 <sup>th</sup> March	British Science Week
Friday 15 <sup>th</sup> March	Red Nose Day
	Pelicans assembly (parents and grandparents welcome)
Monday 18 <sup>th</sup> March	PTA Year 2 Bake Sale
Friday 22 <sup>nd</sup> March	Mr Mitchell's music concert (pm)
	PTA non-uniform day (for Easter event)
25 <sup>th</sup> -27 <sup>th</sup> March (evening)TBC	Alban Arena Concert-choir & musicians
Wednesday 27 <sup>th</sup> March	PTA Easter event 3:15pm
Thursday 28 <sup>th</sup> March	Easter hat parade (children to bring a decorated hat to school)
	Non-uniform day for winning house (KS2)
	Last day of term-school finishes at 2:15pm/2:20pm
SUMMER TERM 2024	
Date	Event
Monday 15 <sup>th</sup> April	Summer term begins
Friday 19 <sup>th</sup> April 3.20pm-3.45pm	Book Look (parents welcome)
Wednesday 24 <sup>th</sup> April	School nurse visiting YR (health checks)
Friday 26 <sup>th</sup> April	Kingfishers assembly (parents and grandparents welcome)
Monday 29 <sup>th</sup> April	PTA YR Bake Sale
May TBC	Walk to School Week

Friday 3 <sup>rd</sup> May	Puffins assembly (parents and grandparents welcome)
Monday 6 <sup>th</sup> May	Bank holiday-school closed
Friday 10 <sup>th</sup> May	Cardinals assembly (parents and grandparents welcome)
13 <sup>th</sup> -16 <sup>th</sup> May	KS2 SATs week
Friday 17 <sup>th</sup> May	National Numeracy Day
Friday 24 <sup>th</sup> May	KS2 sports day (parents and grandparents welcome)
Monday 27 <sup>th</sup> -Friday 31 <sup>st</sup> May	Half term-school closed
Monday 3 <sup>rd</sup> June	INSET day
Tuesday 4 <sup>th</sup> - Friday 7 <sup>th</sup> June	Y6 Bikeability (optional-more information to follow)
Tuesday 4 <sup>th</sup> -Friday 14 <sup>th</sup> June	Y4 multiplication table checks
Friday 7 <sup>th</sup> June 3.20pm-3.45pm	Book Look (parents welcome) Nightingales assembly (parents and grandparents welcome)
w.b. 10 <sup>th</sup> June	Y1 phonics screening check week
Monday 10 <sup>th</sup> June	PTA Year 4 Bake Sale
Friday 14 <sup>th</sup> June	Skylarks assembly (parents and grandparents welcome)
Wednesday 26 <sup>th</sup> June	School photographer-class photos
24 <sup>th</sup> June-5 <sup>th</sup> July TBC	National Fieldwork fortnight
Monday 8 <sup>th</sup> July	PTA Year 5 Bake Sale
Tuesday 9 <sup>th</sup> July 9:00am	Y6 play (parents and grandparents welcome)
Wednesday 10 <sup>th</sup> July 9:00am	Y6 play (parents and grandparents welcome)
Thursday 11 <sup>th</sup> July	Transition day-meet the new teacher
Friday 12 <sup>th</sup> July 9:00am	Infant sports Day Mr Mitchell's music assembly (pm) Annual school report sent home
Friday 19 <sup>th</sup> July 9:00am	Y6 leavers' assembly (parents and grandparents welcome) End of term for children-school finishes at 2:15pm/2:20pm Non-uniform day for winning house (KS2)
Monday 22 <sup>nd</sup> & Tuesday 23 <sup>rd</sup> July	INSET days-school closed

Term Dates 2024-25 (Next academic year)	
Monday 2 <sup>nd</sup> September 2024	INSET Day (school closed)
28 <sup>th</sup> October 2024-1 <sup>st</sup> November 2024	<b>Half term holiday</b> (school closed)
23 <sup>rd</sup> December 2024-3 <sup>rd</sup> January 2025	<b>Christmas holiday</b> (school closed)
17 <sup>th</sup> February 2025-21 <sup>st</sup> February 2025	<b>Half term holiday</b> (school closed)
7 <sup>th</sup> April 2025-21 <sup>st</sup> April 2025	<b>Easter holiday</b> (school closed)
26 <sup>th</sup> May 2025-30 <sup>th</sup> May 2025	<b>Half term holiday</b> (school closed)
24 <sup>th</sup> July 2025-3 <sup>rd</sup> September 2025	<b>Summer holiday</b> (school closed)

\*Please note that we will add 4 **INSET days** and 1 **Occasional day** (when the school is closed) for 2024-25 later in the year.